

Context and Development: Exploring the Work of Tetsu Kariya

Tetsu Kariya is a renowned Japanese artist whose thought-provoking sculptures have garnered international acclaim. His works explore the complex relationship between humans and their environment, examining themes of context, development, and the human condition with profound sensitivity.



Context and Development by Tetsu Kariya

★★★★☆ 4.8 out of 5

Language : English
File size : 2483 KB
Text-to-Speech : Enabled
Enhanced typesetting : Enabled
Word Wise : Enabled
Print length : 340 pages

FREE

DOWNLOAD E-BOOK



Environmentalism and Social Commentary



Kariya's sculptures often engage with environmental issues, using discarded materials to create powerful visual statements. His work, "Tree," for instance, is composed of thousands of plastic bottles, juxtaposing the natural form of a tree with the artificial materials that threaten our planet. Through such installations, Kariya challenges viewers to confront their own consumption habits and the impact of human activity.



Social commentary also permeates Kariya's creations. His "Birds," crafted from recycled newspapers, symbolizes the often-ignored voices of the marginalized. The fragility of the paper material underscores the vulnerability of those whose voices are often drowned out. Kariya's art thus serves as a platform for social awareness, provoking viewers to reflect on the inequalities and injustices that shape our world.

Site-Specific Installations



One of the defining characteristics of Kariya's work is its site-specificity. He meticulously considers the context of his installations, often using materials found locally. By incorporating elements of the surrounding environment, he establishes a unique dialogue between his sculptures and their surroundings. His "Boat," for example, constructed from local wood and placed on a riverbank, pays homage to the area's maritime history.

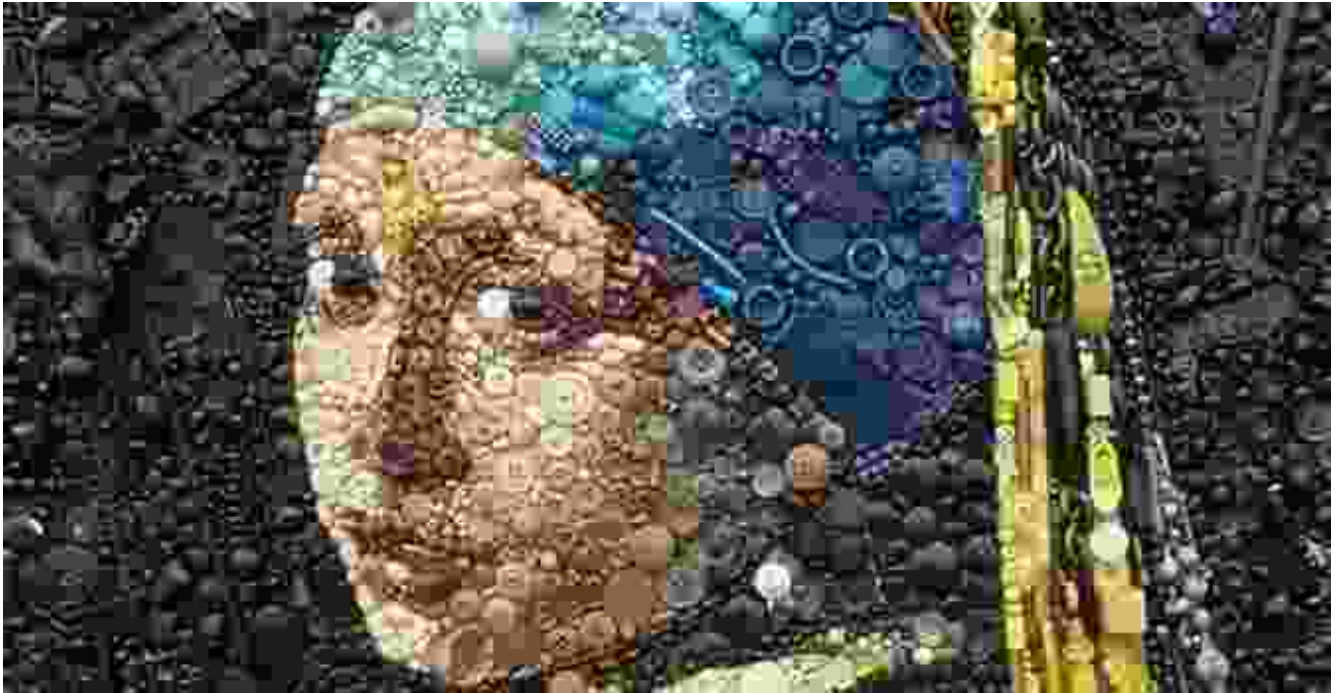


Kariya's site-specific installations often evoke a sense of impermanence. Many of his works are designed to deteriorate over time, mirroring the cyclical nature of growth and decay. His "Figure," made from recycled materials, gradually disintegrates, reminding viewers of the transient nature of human existence.

Humanity and Nature



Throughout his career, Kariya has explored the complex relationship between humanity and nature. His sculptures often depict human figures interacting with their surroundings, highlighting the interconnectedness of all living beings. In "People," he uses found objects to create a diverse group of individuals, underscoring the universality of human experience.



Kariya's work also addresses the impact of human activity on the environment. His "Tree and People," a sculpture made from recycled materials, depicts a tree surrounded by human figures. As viewers engage with the piece, they are confronted with the tension between human development and the preservation of natural spaces.

Tetsu Kariya's sculptures stand as powerful testaments to the interconnectedness of humans, the environment, and the human condition. Through his thoughtful use of materials, site-specific installations, and evocative imagery, he invites viewers to reflect on their own place within the natural world and the social issues that shape our societies. Kariya's work transcends aesthetic boundaries, becoming a catalyst for critical thinking and inspiring a deeper understanding of our relationship with the world around us.

Context and Development by Tetsu Kariya

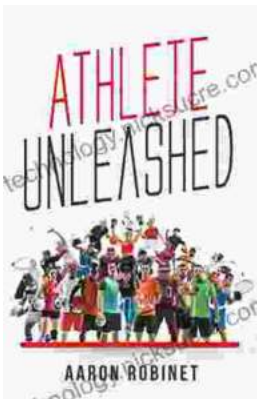


★★★★☆ 4.8 out of 5

Language : English
File size : 2483 KB
Text-to-Speech : Enabled
Enhanced typesetting : Enabled
Word Wise : Enabled
Print length : 340 pages

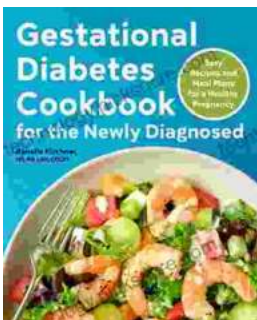
FREE

DOWNLOAD E-BOOK



Holistic Approach to Unleashing Your Best Inner Athlete

As an athlete, you know that success is not just about physical strength and endurance. It's also about mental and emotional well-being. In...



Easy Recipes And Meal Plans For Healthy Pregnancy

Congratulations on your pregnancy! This is an exciting time, but it can also be a time of change and adjustment. One of the most important things you...